



Naval Facilities Engineering Command, Pacific
258 Makalapa Drive, Suite 100
Pearl Harbor, Hawaii 96860-3134

MILITARY RELOCATION TO GUAM AND CNMI PROGRAMMATIC AGREEMENT (PA) MEMO #2

Project: P-230 GSE Shop/Shed, AV Armament/Life Supp & LOX Pad	Date: July 2, 2014
Project Location: Andersen Air Force Base	Prepared By: NAVFAC Pacific
PROJECT DESCRIPTION:	
<p>This project involves construction of a one-story high-bay composite facility within the bounds of North Ramp at Andersen Air Force Base (Figure 1). Although not specific to North Ramp itself, the traditional place name of the general area around it is Upi. There will be four separate components of the facility:</p> <ul style="list-style-type: none"> a. Ground Support Equipment Maintenance Shop (GSE Shop) b. Ground Support Equipment Holding Shed (GSE Shed) c. Aviation Armament Shop (AV Armament) d. Aviation (AV) Life Support Systems Shop (AV Life Supp) <p>P-230 was originally identified in the 2010 Final EIS (FEIS) for the military relocation to Guam and CNMI and Appendix E of the 2011 <i>Programmatic Agreement among the Department of Defense, the Advisory Council on Historic Preservation, the Guam State Historic Preservation Officer, and the Commonwealth of the Northern Mariana Islands State Historic Preservation Officer Regarding the Relocation to the Islands of Guam and Tinian</i> (the Undertaking). Accordingly, this memo presents information to allow interested members of the public an opportunity to provide comments on the Department of Defense's (DoD's) determination of effect and if adverse, DoD's plan for resolving that effect.</p> <p>Project works include site preparation (site clearing, excavation, earthwork, and preparation for construction). The effort may also require seismic fault, geotechnical/geophysical and topographic surveys and munitions of explosive concern removal. Paving and site improvements include grading, drainage, concrete pavements for GSE staging and container storage, and asphalt concrete parking for approximately 30 government and privately owned vehicles.</p> <p>Andersen Air Force Base is one of the largest airfields in the US Air Force. It covers 6,275 hectares (15,500 acres) and occupies a mostly flat, uplifted limestone plateau in the northern</p>	

- 1 The posting of this PA Memo on the CRI website is required by Stipulation V.B.3. of the 2011 Military Relocation PA as a means for interested members of the public to provide comments on DoD's determination of effect and if adverse, its proposed resolution. Confidentiality requirements under the Archaeological Resources Protection Act (ARPA) and National Historic Preservation Act (NHPA) prohibit federal agencies from publicly disclosing the exact nature and location of archaeological sites and other types of historic properties such as traditional cultural properties (TCPs).

portion of the island of Guam. The Main Operations area in the eastern third of the base includes the main active airfield and an array of operations, maintenance and community support facilities, most of which are located along the South Ramp. The North Ramp area includes operations of the Navy's HSC-25, munitions storage in the former Strategic Command storage area, and parking apron space for contingency operations. The central third of the base is a Munitions Storage Area (MSA). The western third is Northwest Field, a WWII-era airfield that is currently used for fixed-wing aircraft, helicopter training, and various field exercises and bivouacs.

The total area of potential effect (APE) for the current project is 6 hectares (16.83 acres).

IDENTIFICATION OF HISTORIC PROPERTIES:

Results of DoD Cultural Resources Review

As stated in the first PA Memo for this project, a portion of one historic property has been identified within the project's APE.

Historic Property 1 is a WW II-era runway complex, which while retaining some of its original layout, is now essentially a Cold War-era airfield with the 1940s elements adapted for larger and heavier aircraft (B-36, B-47 and B-52).

COMMENTS RECEIVED FOR PA MEMO #1:

All comments received by the closure of the 45 day comment period on June 16 are posted on the Cultural Resources Information (CRI) website at <http://go.usa.gov/kZWG> (please note, the URL is case sensitive). The DoD has taken these comments into account in support of its determination of effect for the proposed project and plan for resolution (see below).

DETERMINATION OF EFFECT:

The DoD has determined that one historic property eligible for listing in the National Register of Historic Places (NRHP) under Criterion A, due to association with events that have made a significant contribution to the broad patterns of history, will be adversely affected by the proposed action.

PLAN FOR RESOLVING ADVERSE EFFECT:

The DoD's proposed resolution of effect is consistent with mitigation requirements in the 2011 military relocation PA and comprised of the following measures:

1. In accordance with Stipulation VI.A., a Historic American Engineering Record (HAER) Survey of **Historic Property 1** was completed in 2012 as mitigation for adverse effects resulting from MILCON P-101 (North Ramp Parking). The HAER was intended to also address adverse effects from all subsequent military relocation projects within the bounds of Historic Property 1.
2. In accordance with Stipulation VI.B., a Public Education and Interpretation booklet in English and Chamorro that includes images, a summary of the work done (HAER), data

- 2 | The posting of this PA Memo on the CRI website is required by Stipulation V.B.3. of the 2011 Military Relocation PA as a means for interested members of the public to provide comments on DoD's determination of effect and if adverse, its proposed resolution. Confidentiality requirements under the Archaeological Resources Protection Act (ARPA) and National Historic Preservation Act (NHPA) prohibit federal agencies from publicly disclosing the exact nature and location of archaeological sites and other types of historic properties such as traditional cultural properties (TCPs).

recovered and a statement of the significance of **Historic Property 1** to the regional culture was also completed in 2012 as mitigation for adverse effects resulting from MILCON P-101. This brochure is posted on the Cultural Resources Information (CRI) website and 1,100 printed copies have been provided to Guam Historic Resources Division (GHRD) for distribution to the public.

3. In accordance with Stipulation VI.F., the DoD has retained a full-time Archaeologist to provide site checks, oversee coordination and execution of the archaeological mitigation measures in the PA and to provide quality control. This individual is on-staff at NAVFAC Marianas and has also been tasked with supporting Command Joint Region Marianas (CJRM) in responding to and reporting of any inadvertent discoveries to the Signatories, Invited Signatories, and Concurring Parties per Stipulation XII of the PA.
4. In accordance with Stipulation VI.G., the DoD updated the Guam Historic Properties Information data form for **Historic Property 1**. This requirement was completed on February 9, 2012 as a component of the HAER, with the revised form forwarded to the GHRD on April 10, 2012.
5. In accordance with Stipulation VII.C.3., the DoD has completed a nomination form for listing of **Historic Property 1** in the NRHP. The nomination form is currently under review by GHRD.

No additional mitigation is proposed.

3 The posting of this PA Memo on the CRI website is required by Stipulation V.B.3. of the 2011 Military Relocation PA as a means for interested members of the public to provide comments on DoD's determination of effect and if adverse, its proposed resolution. Confidentiality requirements under the Archaeological Resources Protection Act (ARPA) and National Historic Preservation Act (NHPA) prohibit federal agencies from publicly disclosing the exact nature and location of archaeological sites and other types of historic properties such as traditional cultural properties (TCPs).

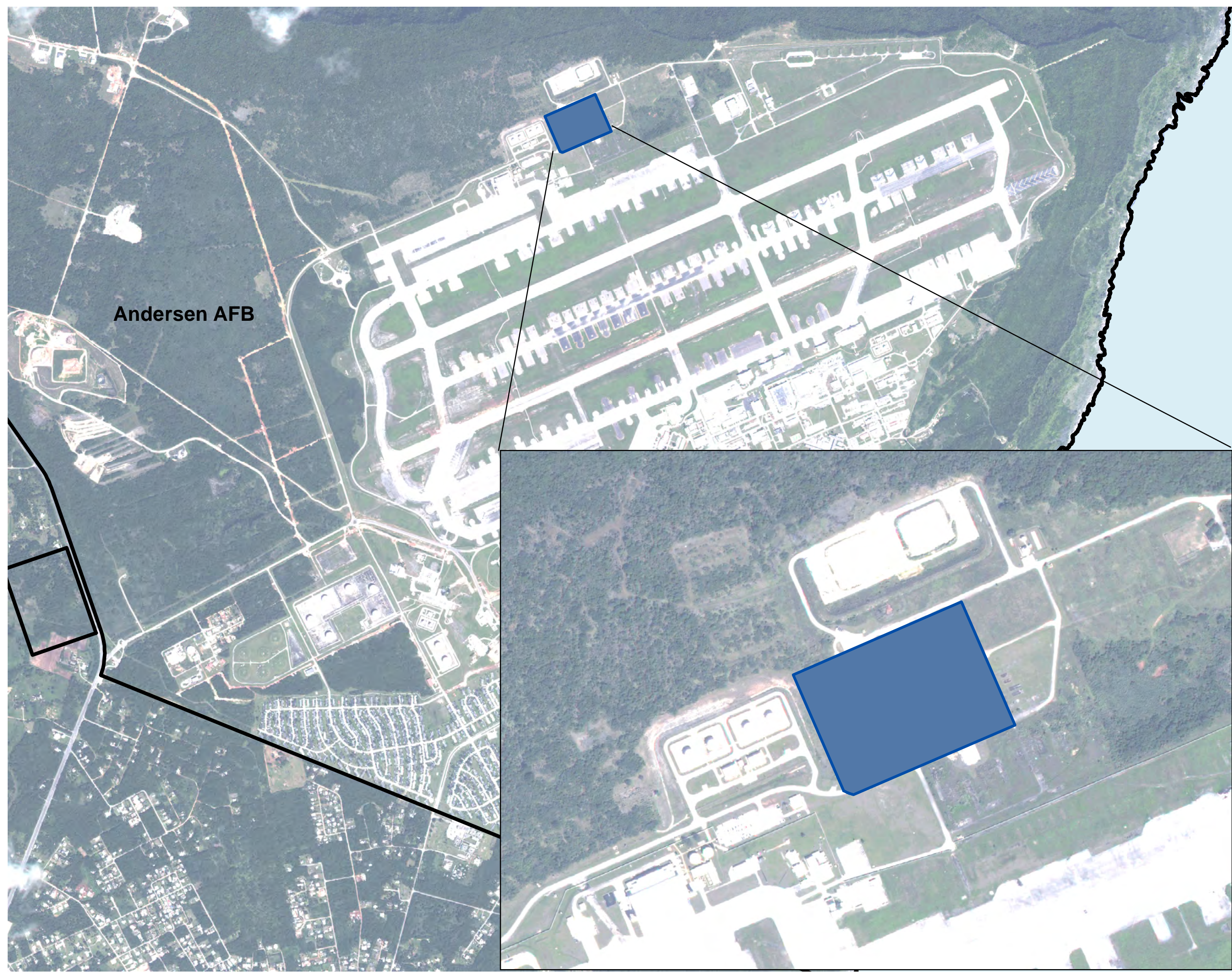

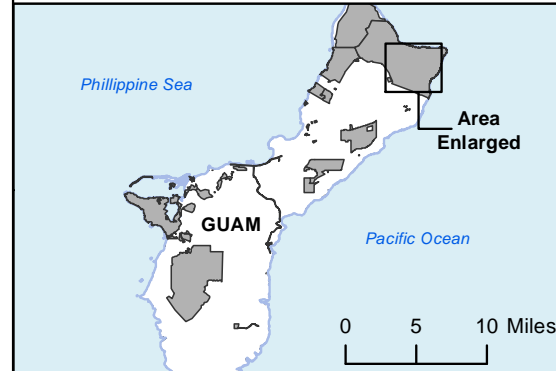
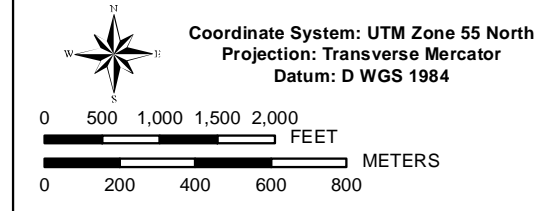


Figure 1
P-230 GSE Shop/Shed, AV
Armament/Life Supp & LOX Pad

Legend
 Impact Footprint (P-230)

Impact Area = 16.83 Ac



Date: Monday, April 28, 2014
 Path: C:\Users\A00155\Documents\GIS Data\MXD\14_AAFB\GIS_Environment\5_Cultural Resources\PA Memo - GSE Shop (Public).mxd